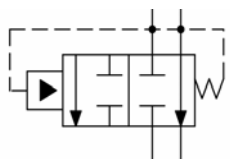
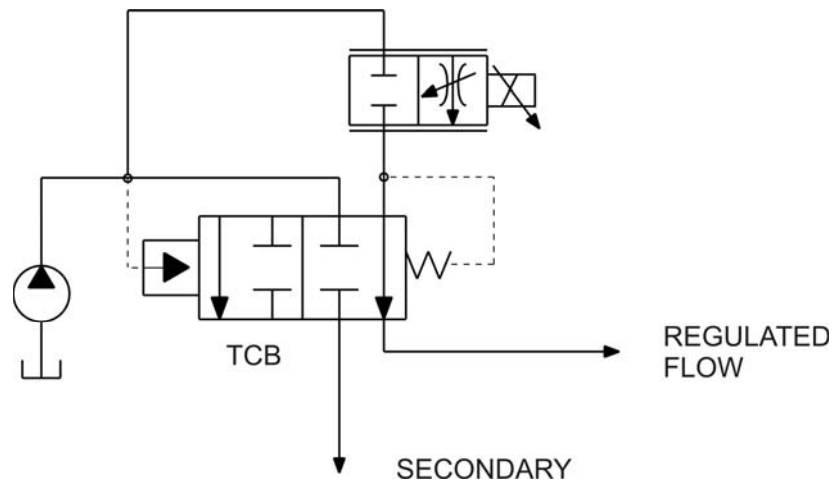


4-way, Priority Type Compensator with -Pass Line

	GPM	PSI	LPM	BAR	MODEL	CAVITY	PAGE
	10	3500	38	245	DG-TCB	7/8" - 14 UNF	80

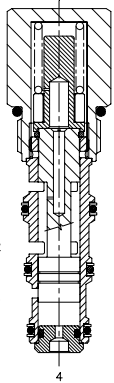
Typical Schematic

Typical application for the TCB is in a proportional circuit to achieve pressure compensated flow control. The pressure compensator is located downstream of the proportional valve to achieve a pressure compensated flow control on the priority line, opening a secondary -pass line, when the differential pressure becomes too high, for all flow in excess of that demanded the control orifice.



**WARNING:** The specifications/application data shown in our catalogs and data sheets are intended only as a general guide for the product described (herein). Any specific application should not be undertaken without independent study, evaluation, and testing for suitability.

**DG-TCB Pressure Compensating Valve, Restrictive Type With -pass**



**DESCRIPTION**

10 size, 7/8-14 thread, "Delta" series, pressure compensating valve, restrictive type with -pass.

**OPERATION**

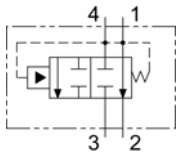
The DG-PCB allows pressure compensated or proportional flow from (1) to (2) regulated the pressure differential across (1) and (4) with a pass of (4) to (3).

The spring chamber is constantly connected at (1).

**FEATURES**

- Hardened parts for longer life.
- Industry common cavity.

**HYDRAULIC SYMBOL**

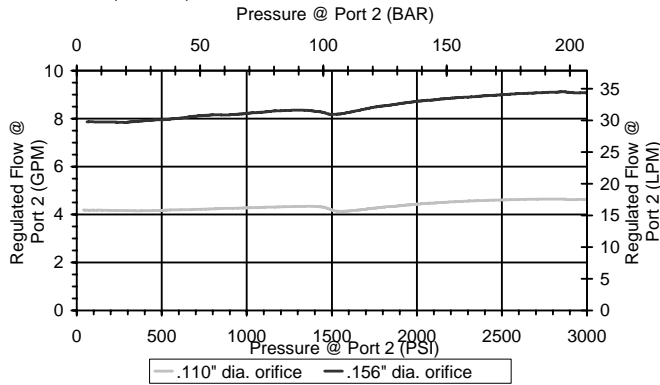


-pass line (3) can be pressurized.

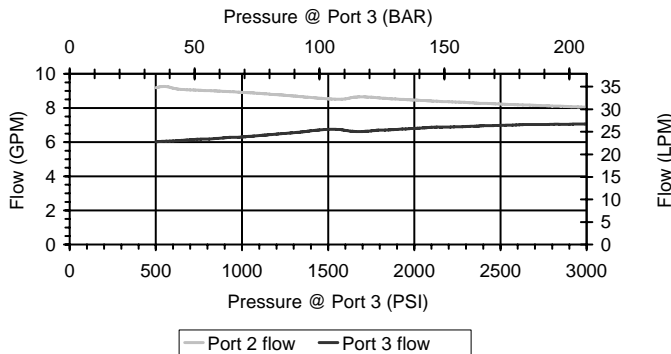
**PERFORMANCE**

**Actual Test Data (Cartridge Only with 150 PSI Spring)**

10 gpm supply flow, .110" orifice, 150 psi spring  
 15 gpm supply flow, .156" orifice, 150 psi spring  
 1500 psi load on port 3



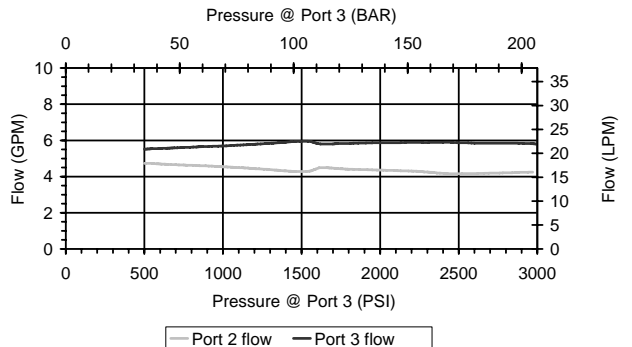
priority port 2 load: 1500-1700 psi, .156" dia orifice, 15 gpm supply  
 not intended for differential pressure > 1500 psi port 4 to port 3



**VALVE SPECIFICATIONS**

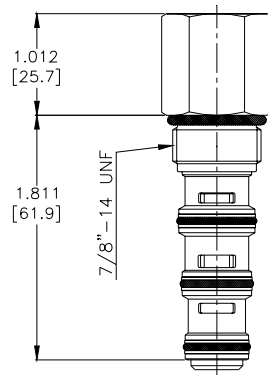
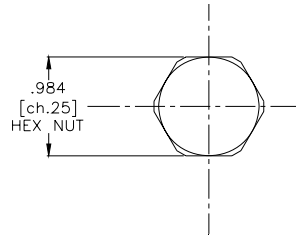
Nominal Flow	10 GPM (38 LPM)
Rated Operating Pressure	3500 PSI (245 bar)
Typical Internal Leakage (150 SSU)	5 cu in/min (82 ml/min) per path
Viscosity Range	36 to 3000 SSU (3 to 647 cSt)
Filtration	ISO 18/16/13
Media Operating Temperature Range	-40° to 250° F (-40° to 120° C)
Weight	.38 lbs. (.17 kg)
Operating Fluid Media	General Purpose Hydraulic Fluid
Cartridge Torque Requirements	30 ft-lbs (40.6 Nm)
Cavity	DELTA 4W
Cavity Tools kit (form tool, reamer, tap)	40500002
Seal Kit	21191214

priority port 2 load: 1500-1700 psi, .110" dia orifice, 10 gpm supply  
 not intended for differential pressure > 1500 psi port 4 to port 3



**WARNING:** The specifications/application data shown in our catalogs and data sheets is intended only as a general guide for the product described (herein). Any specific application should not be undertaken without independent study, evaluation, and testing for suitability.

**DIMENSIONS**



(for bodies style and sizes see section "Accessories")

**ORDERING INFORMATION**

<b>DG - TCB</b>		-	-	-	-
<b>OPTIONS</b>					
Buna Standard	<b>00</b>			Blank	<b>BODIES</b>
Viton Standard	<b>V0</b>			<b>N</b>	Without Body
				<b>S</b>	3/8" BSP Ports
					#6 SAE Ports
			<b>014</b>	<b>PRESSURE SETTINGS</b>	
			<b>020</b>	10,5 bar (150 psi)	
			<b>032</b>	20 bar (285 psi)	
				32 bar (460 psi)	
				Differential Pressure Across	
				External Controlling Orifice	

**WARNING:** The specifications/application data shown in our catalogs and data sheets is intended only as a general guide for the product described (herein). Any specific application should not be undertaken without independent study, evaluation, and testing for suitability.