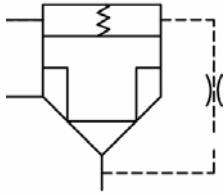
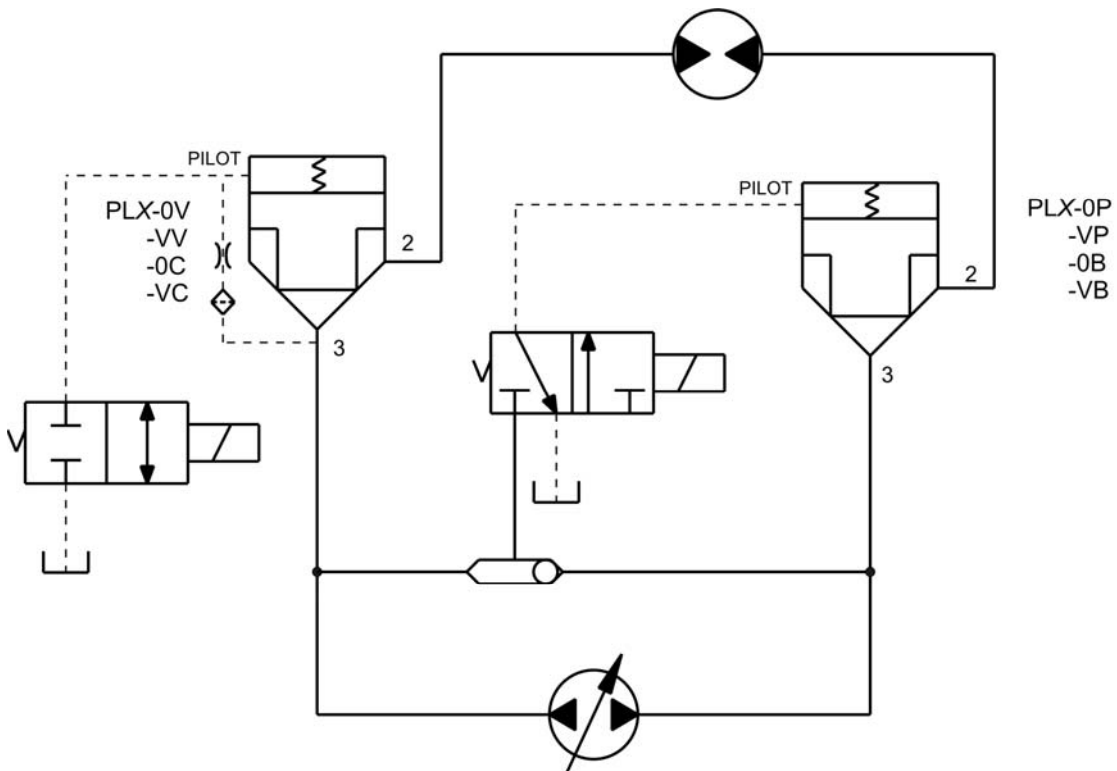


Logic Elements

	GPM	PSI	LPM	BAR	MODEL	PAGE
	40	3500	154	241	SL-PLA	274
	40	3500	154	241	SL-PLB	276
	40	3500	154	241	SL-PLC	278

Typical Schematic

Typical application for the PLA, PLB, and PLC is on a circuit as bi-directional pilot operated 2 way valve with either vent to open or pilot to close from an external source.



**WARNING:** The specifications/application data shown in our catalogs and data sheets are intended only as a general guide for the product described (herein). Any specific application should not be undertaken without independent study, evaluation, and testing for suitability.

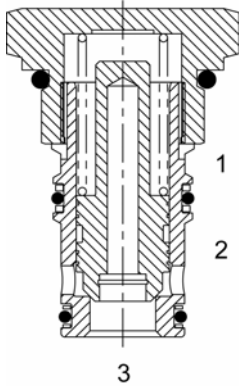
SL-PLA Super Series, Logic Valve

**DESCRIPTION**

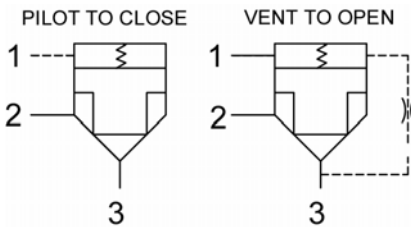
16 size, 1 5/16-12 thread, "Super" series, logic valve

**OPERATION**

The SL-PLA with an orifice between ports (3) and (1) maintains a constant flow rate from (3) regardless of load pressure changes in the system upstream of (3), or in the pass leg at (2) as long as pressure at (2) is less than (1). Used for basic blocking applications.



**HYDRAULIC SYMBOL**



**FEATURES**

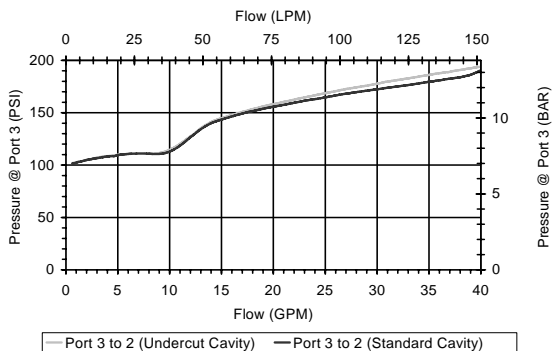
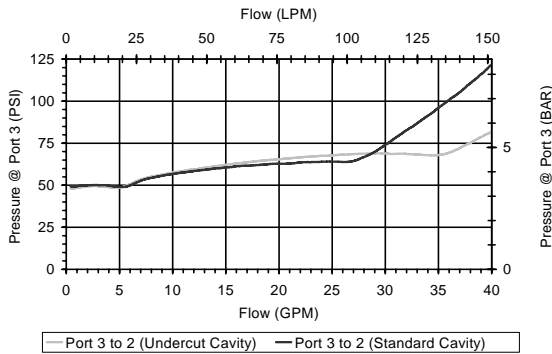
- Hardened parts for long life.
- Industry common cavity.



For bidirectional applications see SL-PLC. For metering see SL-PCA or SL-PCB.

**PERFORMANCE**

Actual Test Data (Cartridge Only)

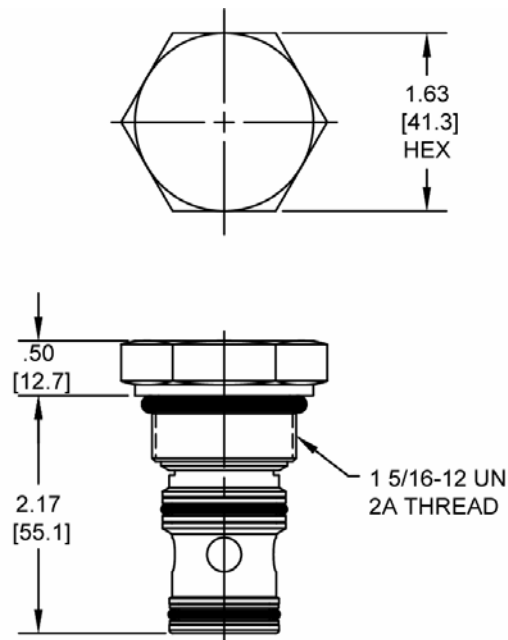


**VALVE SPECIFICATIONS**

Nominal Flow	40 GPM (151 LPM)
Rated Operating Pressure	3500 PSI (241 bar)
Viscosity Range	36 to 3000 SSU (3 to 647 cSt)
Filtration	ISO 18/16/13
Media Operating Temperature Range	-40° to 250° F (-40° to 120° C)
Weight	.69 lbs. (.31 kg)
Operating Fluid Media	General Purpose Hydraulic Fluid
Cartridge Torque Requirements	90 ft-lbs. (122 Nm)
Cavity	<a href="#">SUPER 3WS</a>
Cavity Form Tool (Finishing)	40500021
Seal Kit	21191409
Seat Ratio	Area of the pilot is 1.2 times the area of the seat at Port 3.

**WARNING:** The specifications/application data shown in our catalogs and data sheets are intended only as a general guide for the product described (herein). Any specific application should not be undertaken without independent study, evaluation, and testing for suitability.

**DIMENSIONS**



(for bodies style and sizes see section "Accessories")

**ORDERING INFORMATION**

<b>SL-PLA</b>		-	-	-	-
<b>OPTIONS</b>					<b>BODIES</b>
Buna Pilot to Close	<b>0P</b>			Blank	Without Body
Buna Vent to Open	<b>0V</b>			<b>S</b>	#12 SAE Ports
Viton Pilot to Close	<b>VP</b>				
Viton Vent to Open	<b>VV</b>				
Buna Pilot to Close w/seals	<b>0B</b>				
Buna Vent to Open w/seals	<b>0C</b>	<b>0020</b>			<b>PRESSURE SETTING</b>
Viton Pilot to Close w/seals	<b>VB</b>	<b>0050</b>			20 PSI (1,4 bar)
Viton Vent to Open w/seals	<b>VC</b>	<b>0100</b>			50 PSI (3,5 bar)
		<b>0150</b>			100 PSI (7 bar)
					150 PSI (10,5 bar)

**WARNING:** The specifications/application data shown in our catalogs and data sheets are intended only as a general guide for the product described (herein). Any specific application should not be undertaken without independent study, evaluation, and testing for suitability.

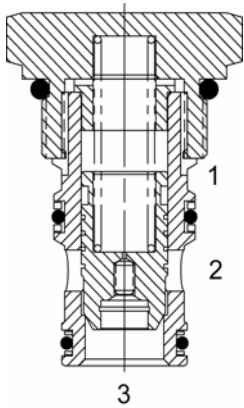
**SL-PLB Super Series, Logic Valve**

**DESCRIPTION**

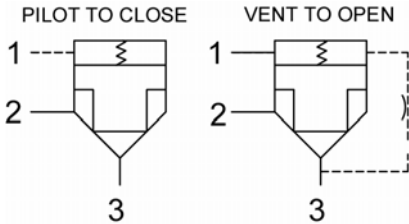
16 size, 1 5/16-12 thread, "Super" series, logic valve

**OPERATION**

The SL-PLB with an orifice between ports (3) and (1) maintains a constant flow rate from (3) regardless of load pressure changes in the system upstream of (3), or in the pass leg at (2) as long as pressure at (2) is less than (1). Used for basic blocking applications.



**HYDRAULIC SYMBOL**



**FEATURES**

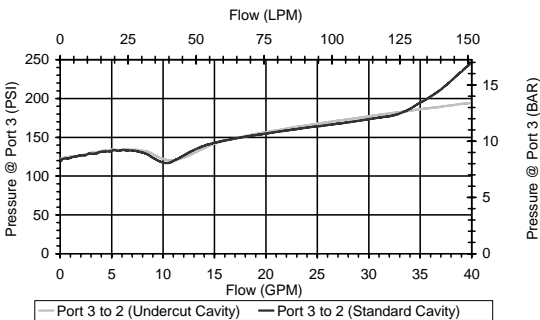
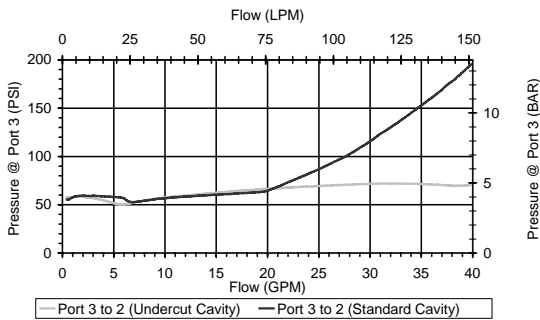
- Hardened parts for long life.
- Industry common cavity.



For bidirectional applications see SL-PLC. For metering see SLPCA or SL-PCB.

**PERFORMANCE**

Actual Test Data (Cartridge Only)

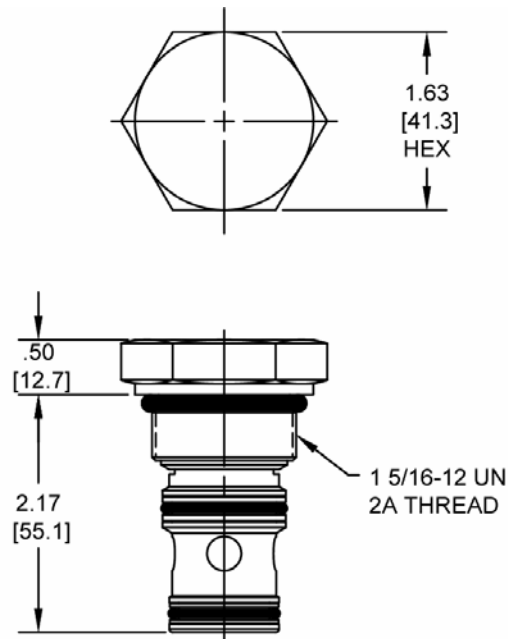


**VALVE SPECIFICATIONS**

Nominal Flow	40 GPM (151 LPM)
Rated Operating Pressure	3500 PSI (241 bar)
Viscosity Range	36 to 3000 SSU (3 to 647 cSt)
Filtration	ISO 18/16/13
Media Operating Temperature Range	-40° to 250° F (-40° to 120° C)
Weight	.69 lbs. (.31 kg)
Operating Fluid Media	General Purpose Hydraulic Fluid
Cartridge Torque Requirements	90 ft-lbs (122 Nm)
Cavity	SUPER 3WS
Cavity Form Tool (Finishing)	40500021
Seal Kit	21191409
Seat Ratio	Area of the Pilot is 1.5 times the area of the seat at Port 3

**WARNING:** The specifications/application data shown in our catalogs and data sheets are intended only as a general guide for the product described (herein). Any specific application should not be undertaken without independent study, evaluation, and testing for suitability.

**DIMENSIONS**



(for bodies style and sizes see section "Accessories")

**ORDERING INFORMATION**

	<b>SL-PLB</b>	-	-	-	-	
	<b>OPTIONS</b>					<b>BODIES</b>
Buna Pilot to Close	<b>0P</b>					Blank
Buna Vent to Open	<b>0V</b>					Without Body
Viton Pilot to Close	<b>VP</b>					3/4" BSP Ports
Viton Vent to Open	<b>VV</b>					
Buna Pilot to Close w/seals	<b>0B</b>					
Buna Vent to Open w/seals	<b>0C</b>					
Viton Pilot to Close w/seals	<b>VB</b>					
Viton Vent to Open w/seals	<b>VC</b>					
						<b>PRESSURE SETTING</b>
					<b>0020</b>	20 PSI (1,4 bar)
					<b>0050</b>	50 PSI (3,5 bar)
					<b>0100</b>	100 PSI (7 bar)
					<b>0150</b>	150 PSI (10,5 bar)

**WARNING:** The specifications/application data shown in our catalogs and data sheets are intended only as a general guide for the product described (herein). Any specific application should not be undertaken without independent study, evaluation, and testing for suitability.

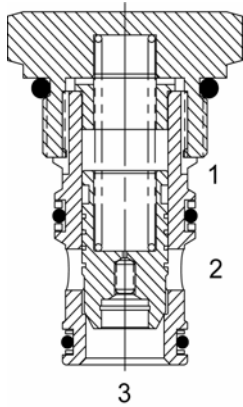
**SL-PLC Super Series, Logic Valve**

**DESCRIPTION**

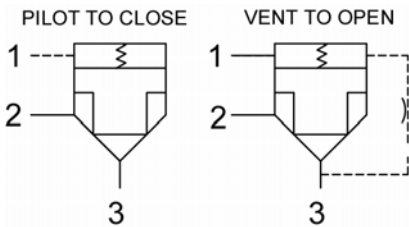
16 size, 1 5/16-12 thread, "Super" series, logic valve

**OPERATION**

The SL-PLC with an orifice between ports (3) and (1) maintains a constant flow rate from (3) regardless of load pressure changes in the system upstream of (3), or in the pass leg at (2) as long as pressure at (2) is less than (1). Used for basic bidirectional blocking applications.



**HYDRAULIC SYMBOL**



**FEATURES**

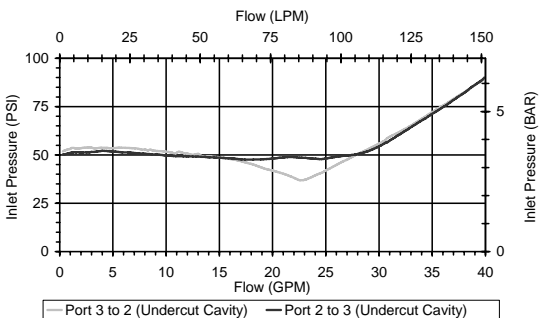
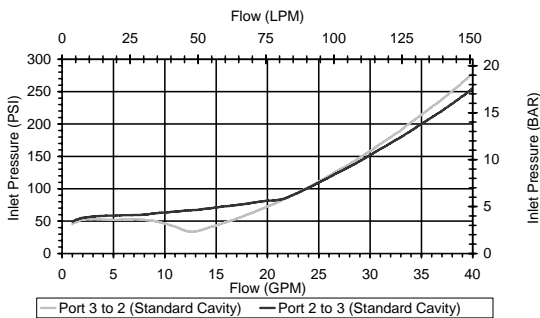
- Hardened parts for long life.
- Industry common cavity.



For metering see SL-PCA or SL-PCB.

**PERFORMANCE**

Actual Test Data (Cartridge Only)

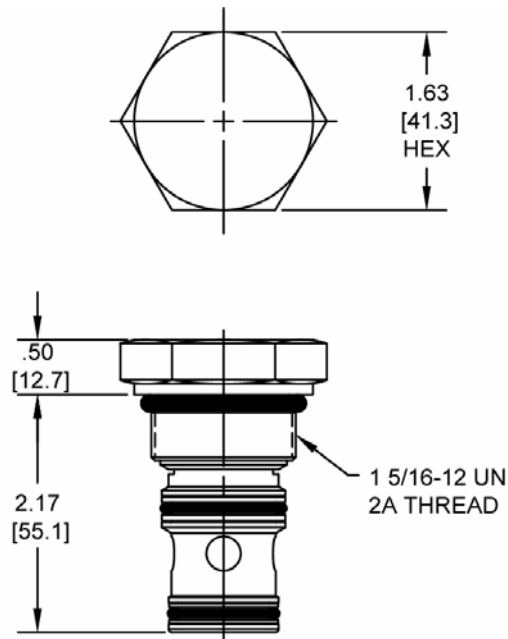


**VALVE SPECIFICATIONS**

Nominal Flow	40 GPM (151 LPM)
Rated Operating Pressure	3500 PSI (241 bar)
Viscosity Range	36 to 3000 SSU (3 to 647 cSt)
Filtration	ISO 18/16/13
Media Operating Temperature Range	-40° to 250° F (-40° to 120° C)
Weight	.65 lbs. (.29 kg)
Operating Fluid Media	General Purpose Hydraulic Fluid
Cartridge Torque Requirements	90 ft-lbs. (122 Nm)
Cavity	SUPER 3WS
Cavity Form Tool (Finishing)	40500021
Seal Kit	21191409
Seat Ratio	Area of the Pilot is 2 times the area of the seat at Port 3

**WARNING:** The specifications/application data shown in our catalogs and data sheets are intended only as a general guide for the product described (herein). Any specific application should not be undertaken without independent study, evaluation, and testing for suitability.

**DIMENSIONS**



(for bodies style and sizes see section "Accessories")

**ORDERING INFORMATION**

	<b>SL-PLC</b>	-	-	-	-	
<b>OPTIONS</b>						<b>BODIES</b>
Buna Pilot to Close	<b>0P</b>					Blank
Buna Vent to Open	<b>0V</b>					<b>N</b>
Viton Pilot to Close	<b>VP</b>					Without Body
Viton Vent to Open	<b>VV</b>					3/4" BSP Ports
Buna Pilot to Close w/seals	<b>0B</b>					
Buna Vent to Open w/seals	<b>0C</b>		<b>0020</b>			<b>PRESSURE SETTING</b>
Viton Pilot to Close w/seals	<b>VB</b>		<b>0050</b>			20 PSI (1,4 bar)
Viton Vent to Open w/seals	<b>VC</b>		<b>0100</b>			50 PSI (3,5 bar)
			<b>0150</b>			100 PSI (7 bar)
						150 PSI (10,5 bar)

**WARNING:** The specifications/application data shown in our catalogs and data sheets are intended only as a general guide for the product described (herein). Any specific application should not be undertaken without independent study, evaluation, and testing for suitability.